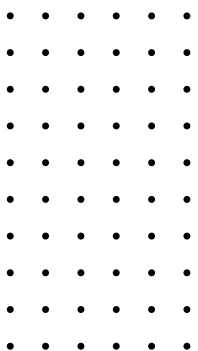
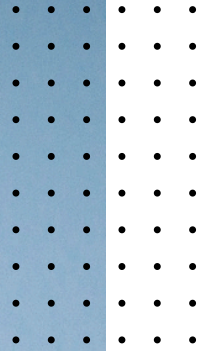


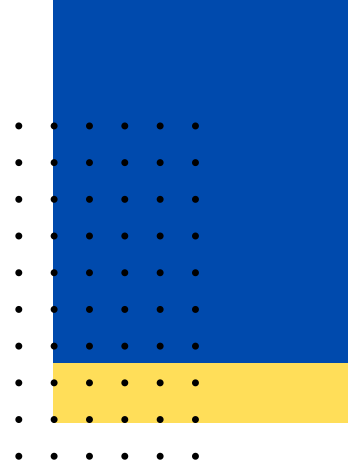


**MIZU ONE  
KONSTRUKSI**



# **COMPANY PROFILE**

# TABLE OF CONTENT



01. Company Overview

02. Our Process

03. What We Do

04. What We Built

05. Management



# COMPANY OVERVIEW

---

## About Us

With experienced individuals working in various large Japanese general contractor companies, work for 20 years, I created a sole proprietorship and want to provide the best results for a series of buildings and the best results of course by equalizing **Quality**, **Schedule** and **Safety**

# OUR PROCESS

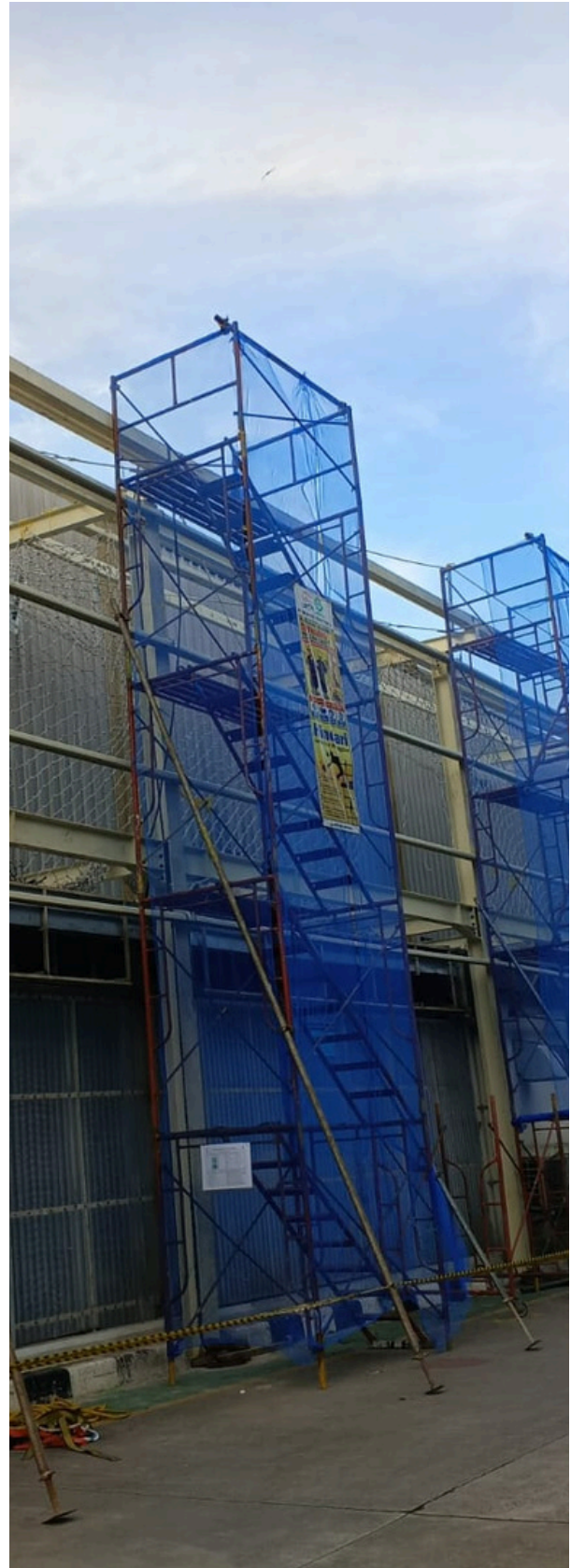
---

## Vision

To become a company that wants to continue to grow through the construction business by utilizing disciplined experience.

## Vision

- Prioritize occupational safety and healthy
- Provide satisfaction to clients by providing added value of quality, safety dan schedule in line.
- Provide human resources who want to work to create and grow together.





## WHAT WE DO

- ☑ Konstruksi Bangunan Gedung
- konstruksi Gedung Industri
- Konstruksi Bangunan Sipil Jalan
- Konstruksi Gedung Pembelajaran
- Konstruksi Gedung Kesehatan
- Konstruksi Gedung lainnya

## PROJECT LIST HOUSE PROJECT- 2024 ~ 2025



1. Renovasi 2lt Rumah Bukit Hijau-Jakarta
2. Renovasi Rumah synergy- Cikarang
3. Rumah baru developer jagakarsa type livehouse
4. Renovasi 2lt Rumah Bukit Asri Sawangan -Depok
5. Pekerjaan interior Depok 2-Margonda
6. Pekerjaan Interior Cilengsi
7. Renovasi Rumah 2lt- Sukabumi
8. Renovasi Rumah 2lt- Sukabumi
9. Pembangunan saung vila- Sukabumi
10. Pembangunan Vila Ciwidey -Bandung
11. Renovasi rumah 2lt- Sawangan , Depok

## PROJECT LIST INDUSTRIAL PROJECT 2024 ~ 2026



1. New Building B3- PT. Sasahara Indonesia
2. New Foundation stamping 700.800 x2, PT. Namicoh Indonesia
3. Add New Warehouse- PT. Sato Label Indonesia
4. New Foundation Stamping 1200ton, PT. Toyota Boshoku Indonesia
5. New Building HPW and Storage building after market- PT. Toyota Boshoku Indonesia
6. Epoxy floor 1000micron 3500m2, PT. Toyota Boshoku Indonesia
7. Installation Rail box Scrap include M/E Work PT. Toyota Boshoku Indonesia
8. Installation Sticker Kompas on hoist crane, PT. Toyota Boshoku Indonesia
9. Main Feeder Utility supply machine 12000ton, PT. Toyota Boshoku Indonesia
10. Additional new Building for storage temporary dies 2, PT. Toyota Boshoku Indonesia
11. Additional Canopy Kaizen Gummi, PT. Toyota Boshoku Indonesia
12. Wall Painting and Epoxy Floor 1000micron, PT. Toyota Boshoku Indonesia
13. Renovation office interior and furniture , Client PT. Deltalube Timmur Raya Karyamandiri
14. Additional New Parking Bike, PT. Sato Label Indonesia
15. New Mezzanine 1 and 2, KIIC Plant PT. Toyota Boshoku Indonesia
16. Additional Steel structure for staging empty box at PT. Toyota Boshoku Indonesia
17. Cover polycarbonate on railing mezzanine maintenance panel at PT. Toyota Boshoku Indonesia
18. Install Sticker magneting for coordinate hoist crane at PT. Toyota Boshoku Indonesia

# WHAT WE BUILT- HOUSE

RENOVATION HOUSE - SAWANGAN, DEPOK

BUILT CLASSIC HOUSE - JAGAKARSA, JAKARTA SELATAN



RENOVATION HOUSE - JAGAKARSA, JAKARTA SELATAN

INTERIOR DESIGN - CILEUNGSI, BOGOR

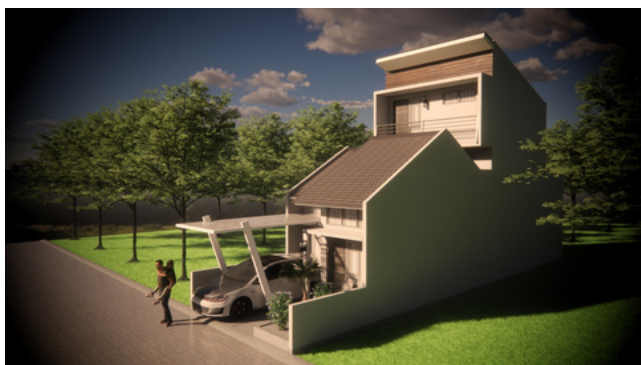


RENOVATION SYNERGY RESIDENCE - JATISARI BEKASI



# WHAT WE BUILT

## PURI BUKIT HIJAU RESIDENCE – JATISAMPURNA KOTA BEKASI



## RUMAH KOS – JAGAKARSA, JAKARTA SELATAN



## RENOVATION HOUSE – SUKABUMI

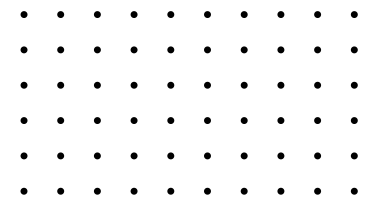
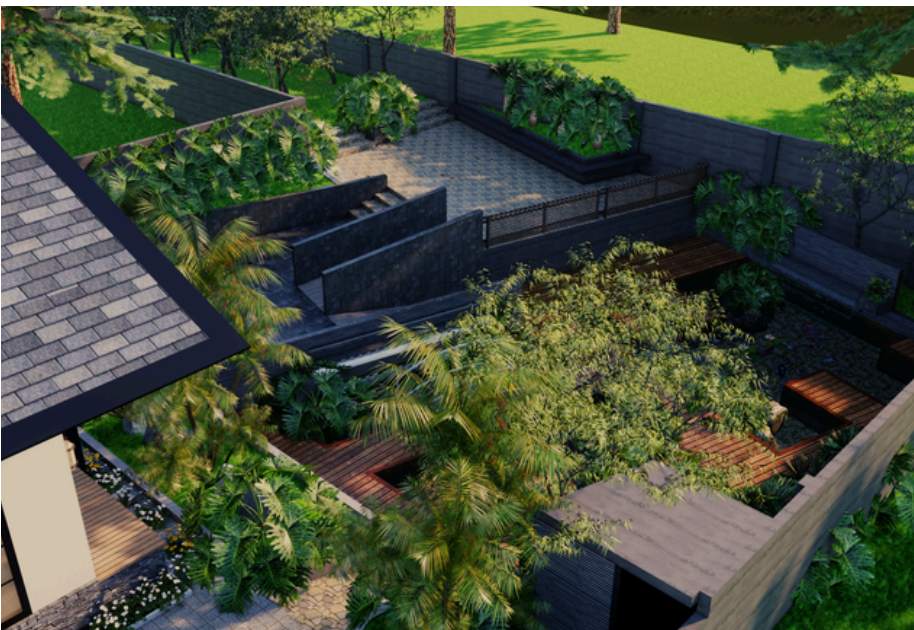
## RENOVATION HOUSE – SAWANGAN, DEPOK



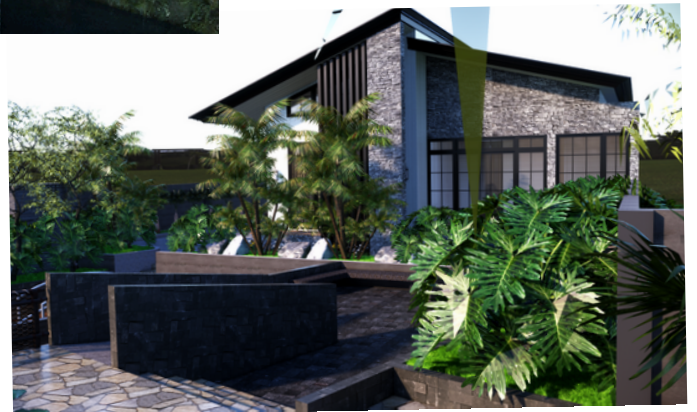
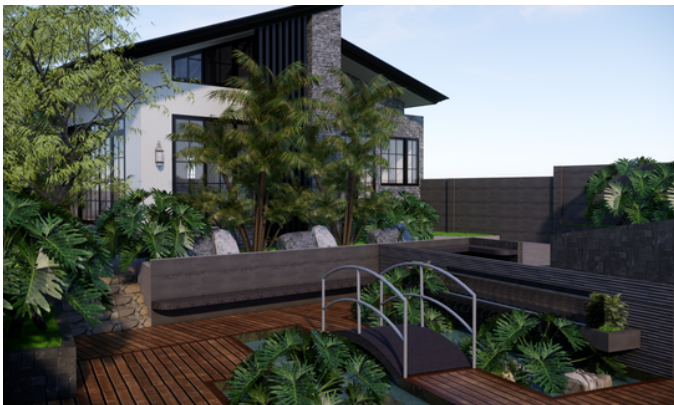
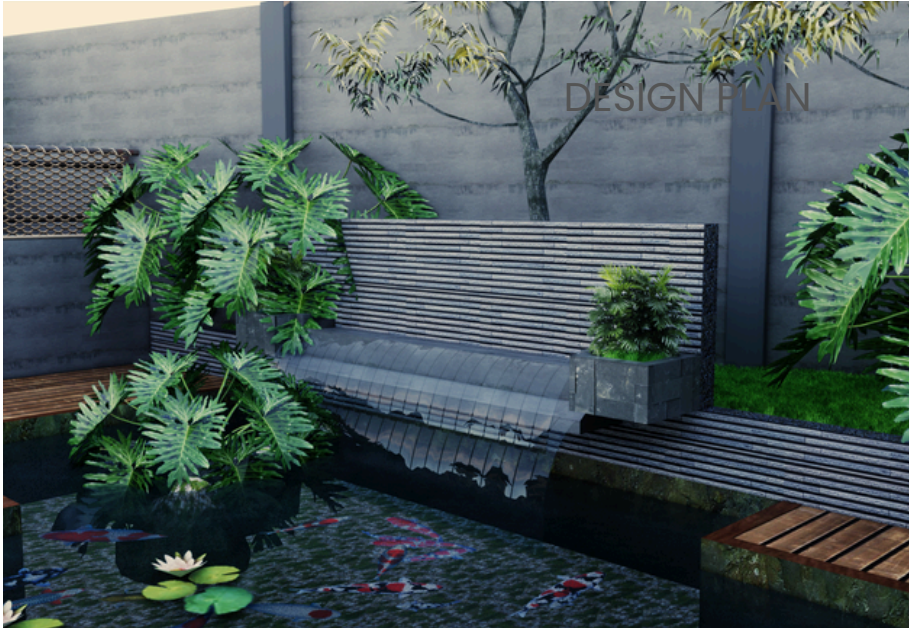
# WHAT WE BUILT

VILLA HOUSE  
CIWIDEY, BANDUNG

## DESIGN PLAN



# WHAT WE BUILT



# WHAT WE BUILT

VILLA HOUSE  
CIWIDEY, BANDUNG

ACTUAL PROGRESS

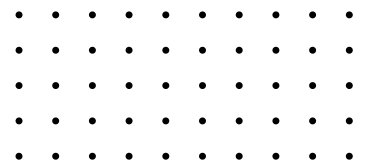


# WHAT WE BUILT

VILLA HOUSE  
CIWIDEY, BANDUNG



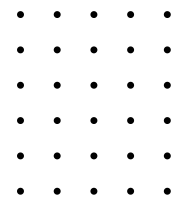
# ACTUAL PROGRESS



# WHAT WE BUILT

PRESS MACHINE FOUNDATION – PT NAMICOH INDONESIA COMPONENT  
PRESS MACHINE 1200T & PRESS MACHINE 800T  
AS SUB CONTRACTOR PT DAIWA HOUSE INDONESIA

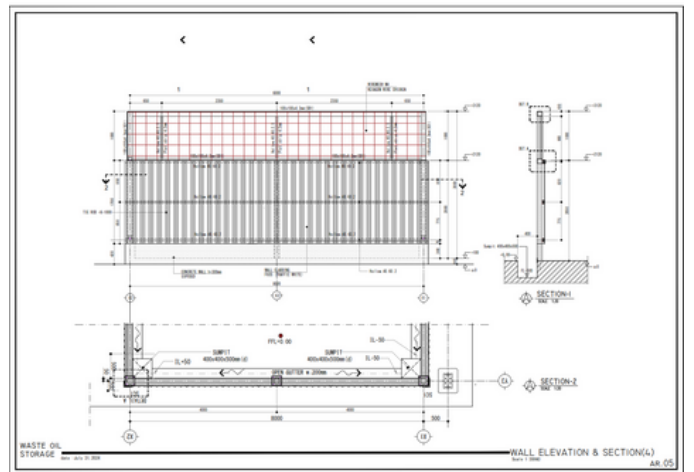
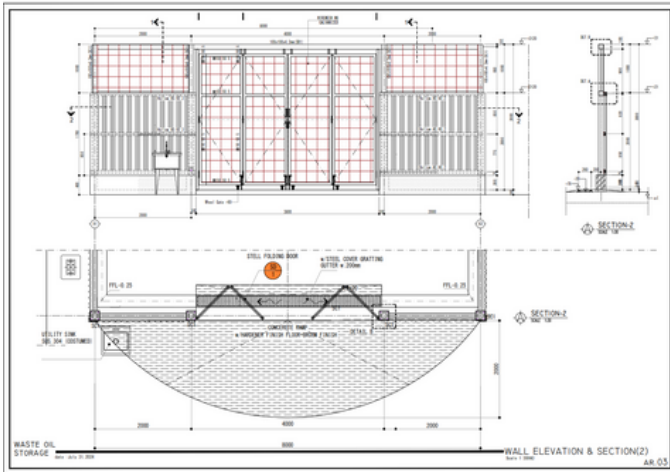
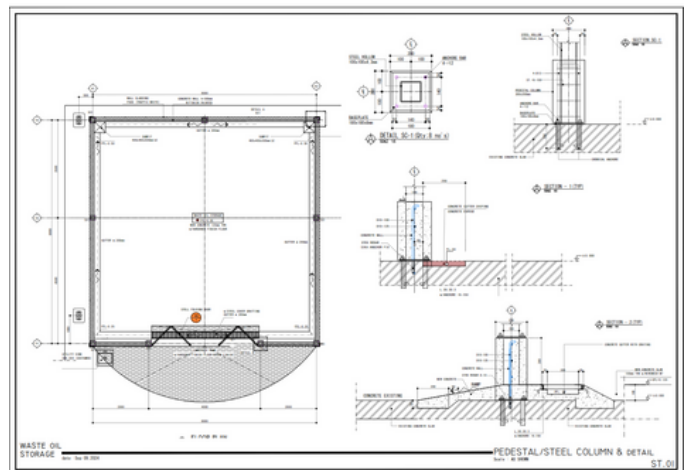
## ACTUAL PROGRESS



# WHAT WE BUILT

OIL ROOM B3 - PT SASAHARA INDONESIA  
KOMPLEK INDUSTRI DE PRIMA TERRA, BANDUNG

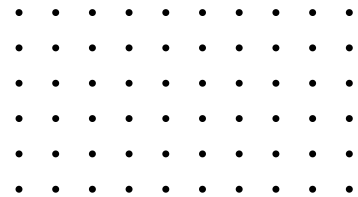
## DESIGN PLAN



# WHAT WE BUILT

OIL ROOM B3 - PT SASAHARA INDONESIA, KAWASAN INDUSTRI BANDUNG

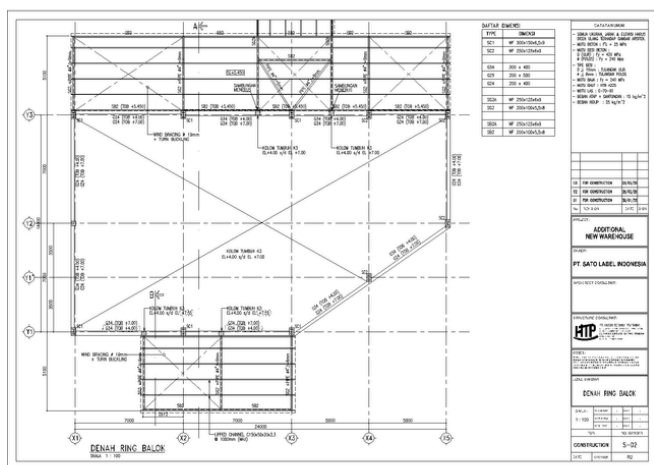
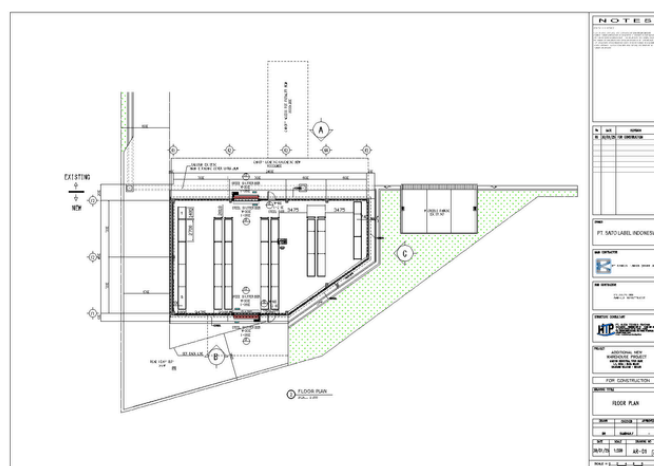
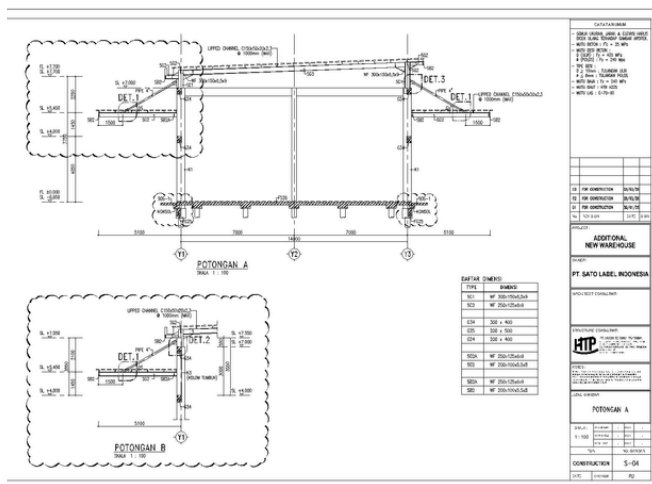
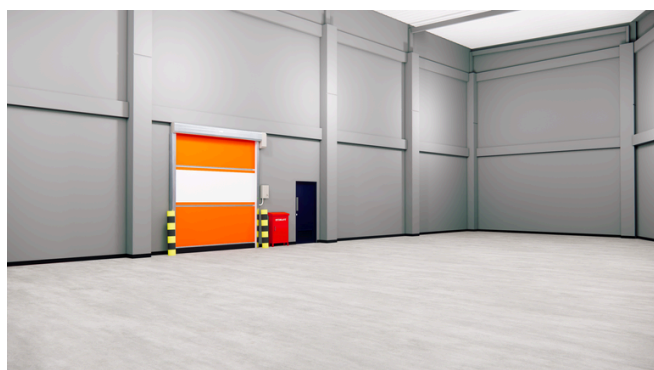
ACTUAL



# WHAT WE BUILT

ADDITIONAL NEW WAREHOUSE  
PT SATO LABEL INDONESIA, MM2100 CIKARANG

## DESIGN PLAN



# WHAT WE BUILT

ADDITIONAL NEW WAREHOUSE  
PT SATO LABEL INDONESIA, MM2100 CIKARANG

## ACTUAL PROGRESS



# WHAT WE BUILT

ADDITIONAL NEW WAREHOUSE  
PT SATO LABEL INDONESIA, MM2100 CIKARANG

## ACTUAL PROGRESS



# WHAT WE BUILT

ADDITIONAL NEW WAREHOUSE  
PT SATO LABEL INDONESIA, MM2100 CIKARANG

## ACTUAL PROGRESS



# WHAT WE BUILT

ADDITIONAL NEW WAREHOUSE  
PT SATO LABEL INDONESIA, MM2100 CIKARANG

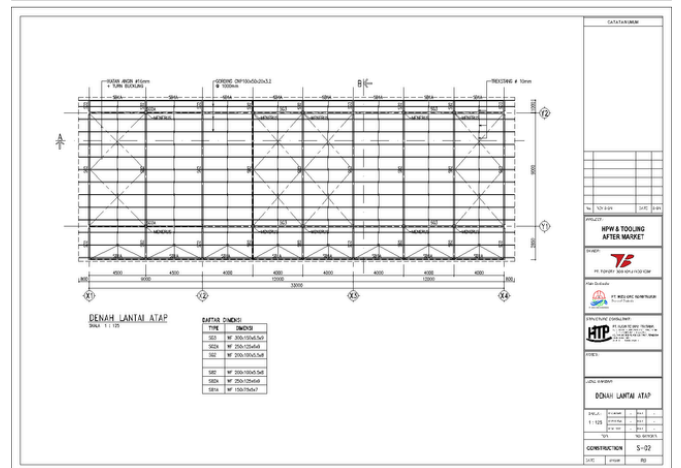
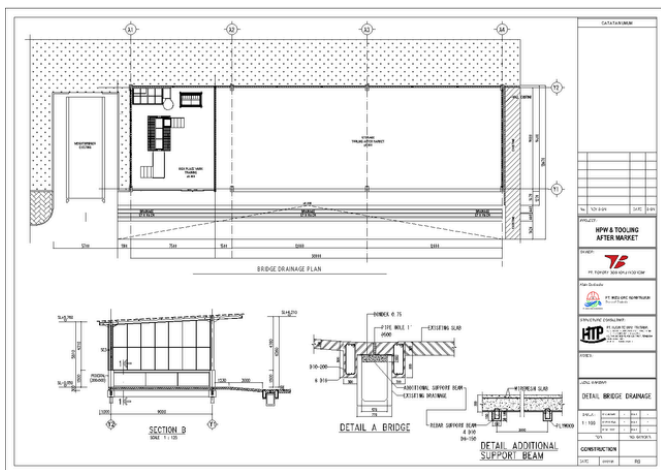
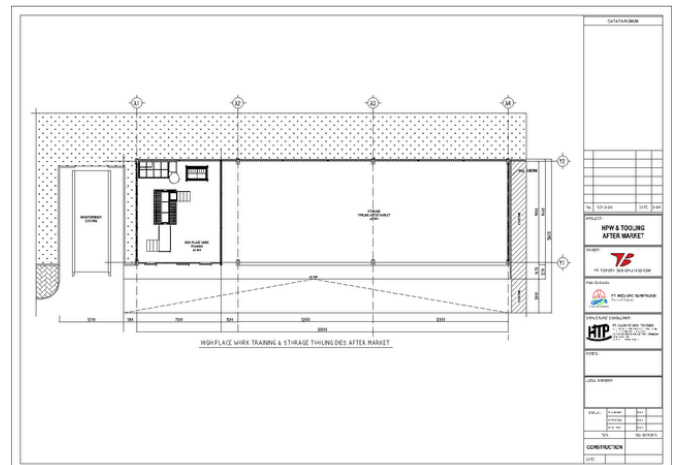
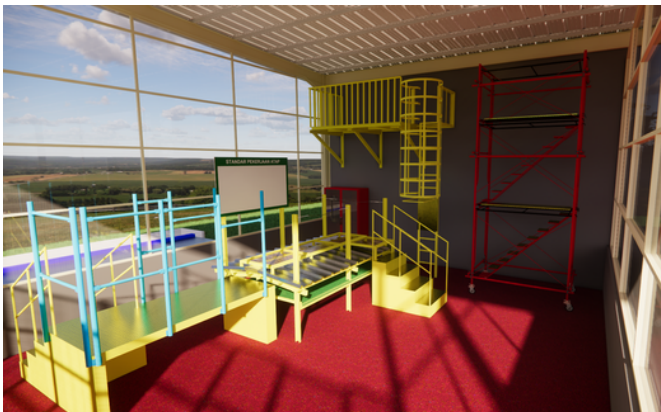
## ACTUAL PROGRESS



# WHAT WE BUILT

BUILD HIGH PLACE WORK & TOOLING DIES AFTER MARKET STORAGE  
PT TOYOTA BOSHOKU INDONESIA, MM2100 CIKARANG

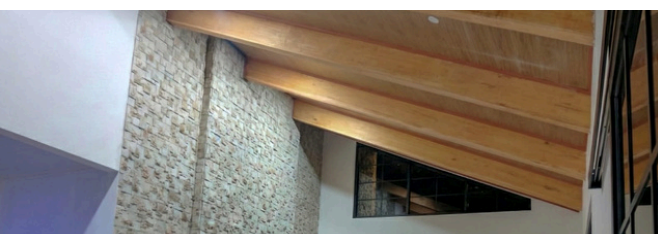
## DESIGN PLAN



# WHAT WE BUILT

BUILD HIGH PLACE WORK & TOOLING DIES AFTER MARKET STORAGE  
PT TOYOTA BOSHOKU INDONESIA, MM2100 CIKARANG

## ACTUAL PROGRESS



# WHAT WE BUILT

BUILD HIGH PLACE WORK & TOOLING DIES AFTER MARKET STORAGE  
PT TOYOTA BOSHOKU INDONESIA, MM2100 CIKARANG

## ACTUAL PROGRESS



# WHAT WE BUILT

BUILD HIGH PLACE WORK & TOOLING DIES AFTER MARKET STORAGE  
PT TOYOTA BOSHOKU INDONESIA, MM2100 CIKARANG

## ACTUAL PROGRESS



# WHAT WE BUILT

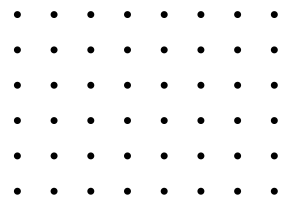
BUILD HIGH PLACE WORK & TOOLING DIES AFTER MARKET STORAGE  
PT TOYOTA BOSHOKU INDONESIA, MM2100 CIKARANG

## ACTUAL PROGRESS



# WHAT WE BUILT

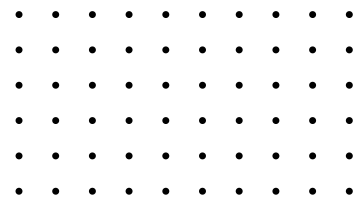
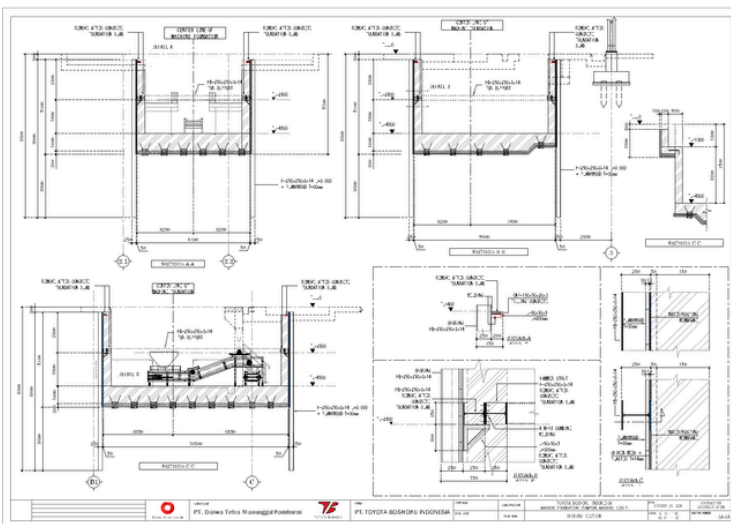
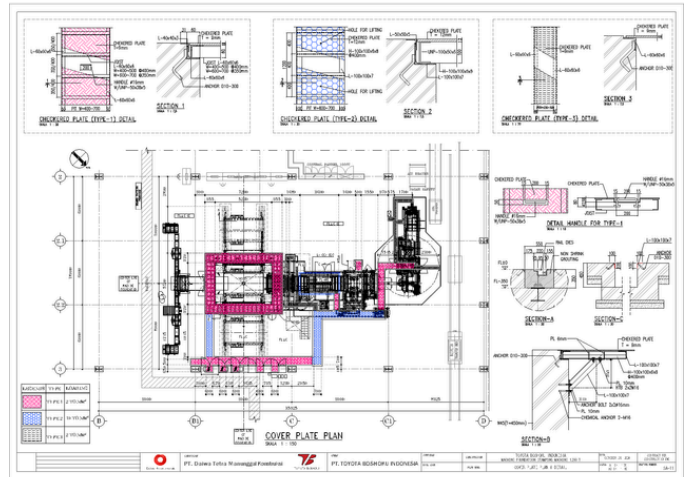
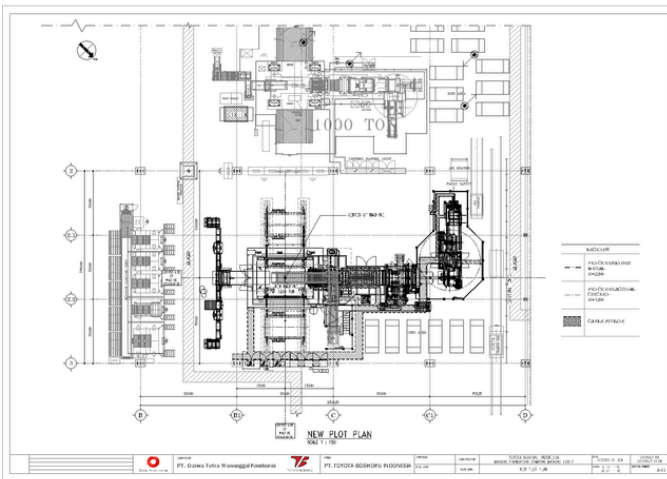
EPOXY FLOOR 1000 MICRON  
PT TOYOTA BOSHOKU INDONESIA  
KAWASAN INDUSTRI MM2100, CIKARANG



# WHAT WE BUILT

MACHINE FOUNDATION 1200T – PT TOYOTA BOSHOKU INDONESIA  
KAWASAN INDUSTRI MM2100, CIKARANG  
AS SUB CONTRACTOR DAIWA HOUSE INDONESIA

## DESIGN PLAN



# WHAT WE BUILT

MACHINE FOUNDATION 1200T – PT TOYOTA BOSHOKU INDONESIA  
KAWASAN INDUSTRI MM2100, CIKARANG  
AS SUB CONTRACTOR DAIWA HOUSE INDONESIA

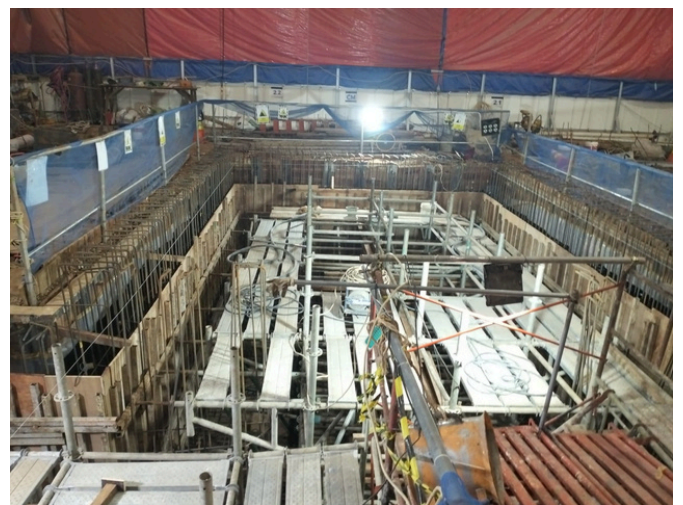
## ACTUAL PROGRESS



# WHAT WE BUILT

MACHINE FOUNDATION 1200T – PT TOYOTA BOSHOKU INDONESIA  
KAWASAN INDUSTRI MM2100, CIKARANG  
AS SUB CONTRACTOR DAIWA HOUSE INDONESIA

## ACTUAL PROGRESS



# WHAT WE BUILT

MACHINE FOUNDATION 1200T – PT TOYOTA BOSHOKU INDONESIA  
KAWASAN INDUSTRI MM2100, CIKARANG  
AS SUB CONTRACTOR DAIWA HOUSE INDONESIA

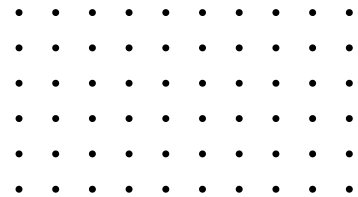
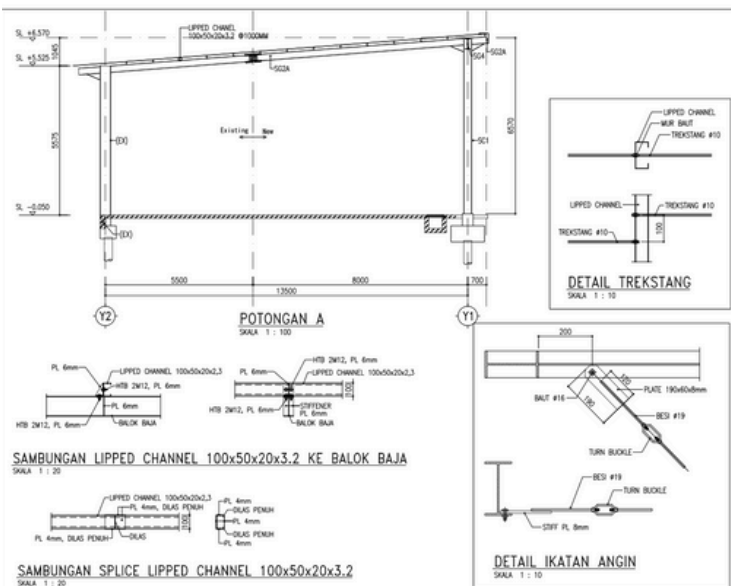
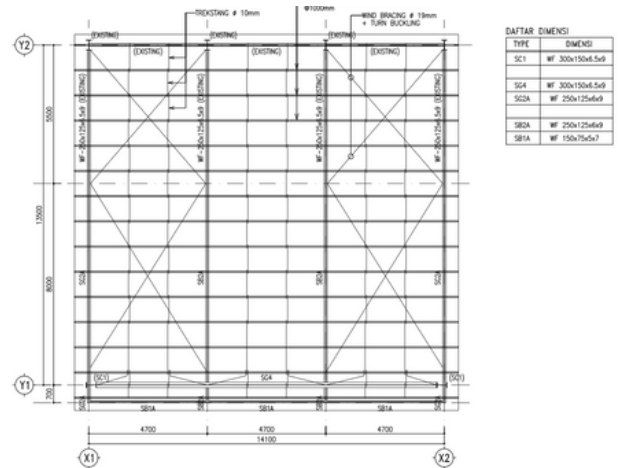
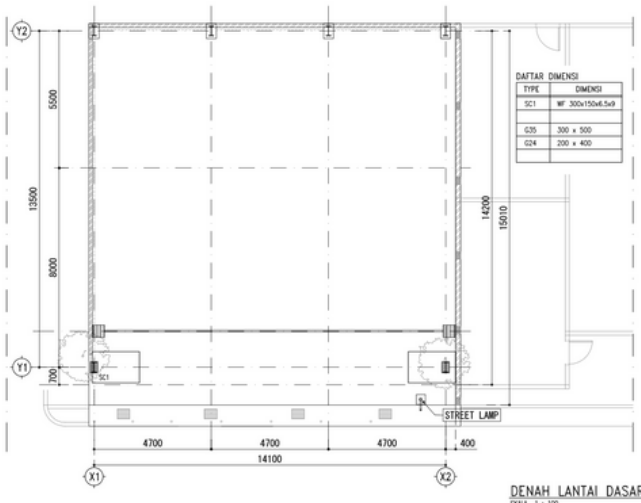
## ACTUAL PROGRESS



# WHAT WE BUILT

RENOVATION STORAGE DIES – PT TOYOTA BOSHOKU INDONESIA  
KAWASAN INDUSTRI MM2100, CIKARANG

## DESIGN PLAN



# WHAT WE BUILT

RENOVATION STORAGE DIES – PT TOYOTA BOSHOKU INDONESIA  
KAWASAN INDUSTRI MM2100, CIKARANG

## ACTUAL PROGRESS



# WHAT WE BUILT

RENOVATION STORAGE DIES – PT TOYOTA BOSHOKU INDONESIA  
KAWASAN INDUSTRI MM2100, CIKARANG

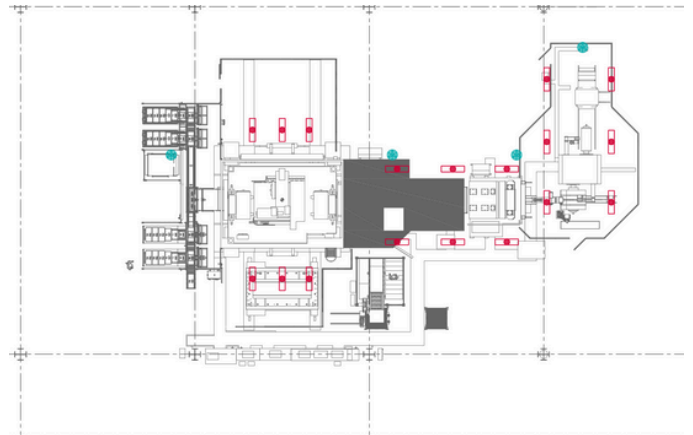
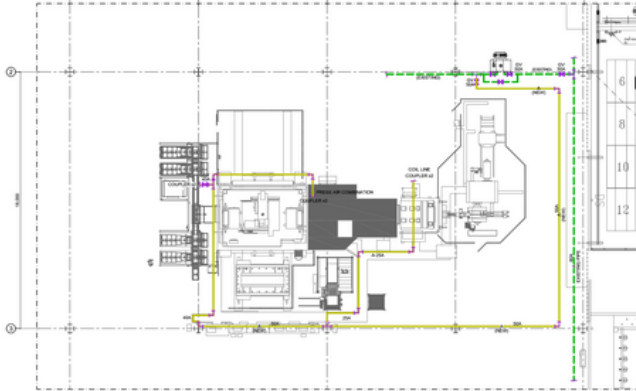
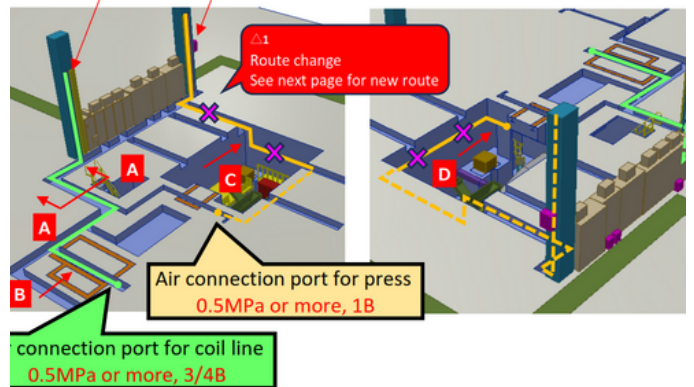
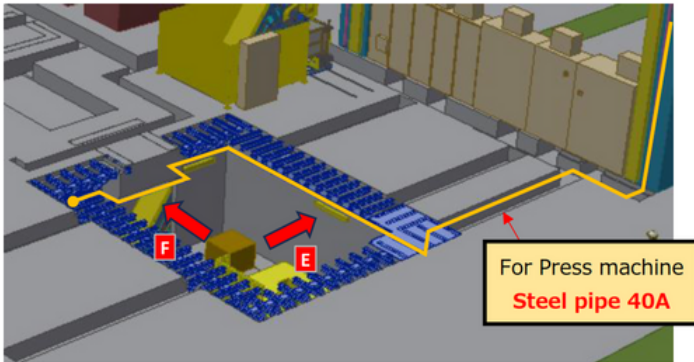
## ACTUAL PROGRESS



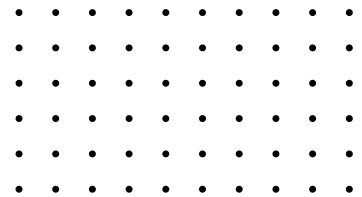
# WHAT WE BUILT

UTILITY POWER & AIR SUPPLY MACHINE STAMPING 1200T  
 PT TOYOTA BOSHOKU INDONESIA  
 KAWASAN INDUSTRI MM2100, CIKARANG

## DESIGN PLAN



LIGHTING SYSTEM PLAN  
 SCALE = 1/150



MAIN FEEDER SYSTEM PLAN - UTILITY PRESS MACHINE 1200T

# WHAT WE BUILT

UTILITY POWER & AIR SUPPLY MACHINE STAMPING 1200T  
PT TOYOTA BOSHOKU INDONESIA  
KAWASAN INDUSTRI MM2100, CIKARANG

ACTUAL PROGRESS



# WHAT WE BUILT

UTILITY POWER & AIR SUPPLY MACHINE STAMPING 1200T  
PT TOYOTA BOSHOKU INDONESIA  
KAWASAN INDUSTRI MM2100, CIKARANG

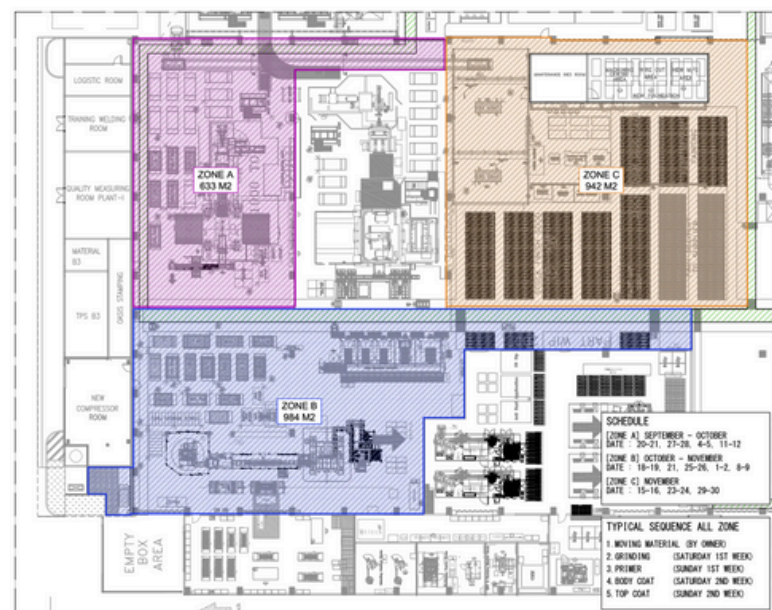
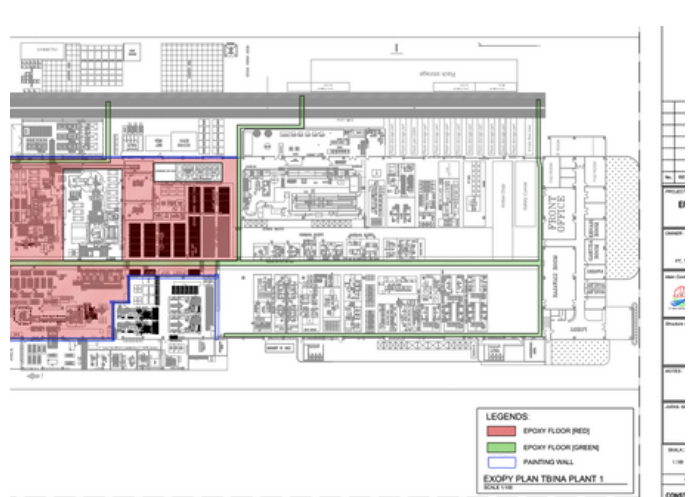
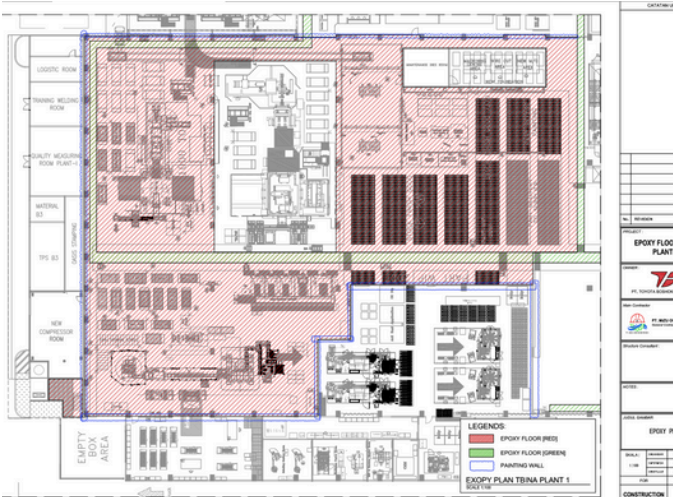
ACTUAL PROGRESS



# WHAT WE BUILT

EPOXY FLOOR 1000 MICRON, PAINTING WALL & PAINTING COLUMN  
 PT TOYOTA BOSHOKU INDONESIA  
 KAWASAN INDUSTRI MM2100, CIKARANG

## DESIGN PLAN



NO.	REVISION	DATE	USER

**EPOXY FLOOR PLAN PLANT 1**

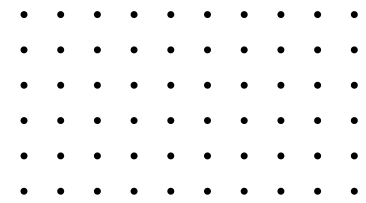
PT. TOYOTA BOSHOKU INDONESIA

PT. BELLUM PROTEKSI

**SEQUENCE EPOXY PLAN**

NO.	REVISION	DATE	USER

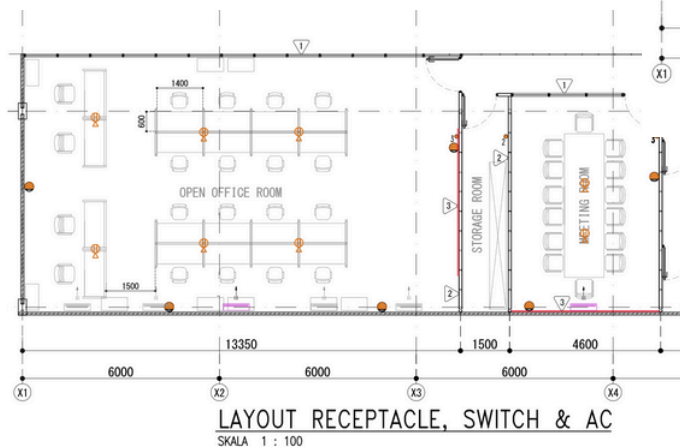
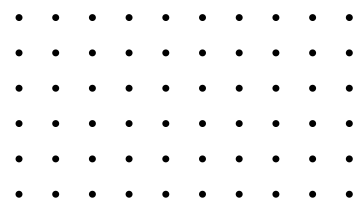
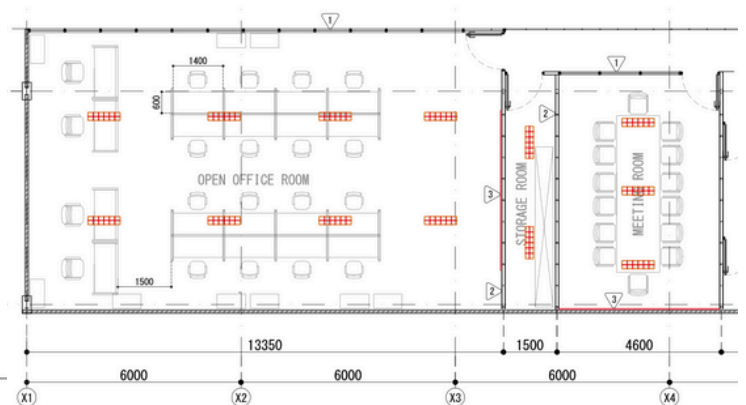
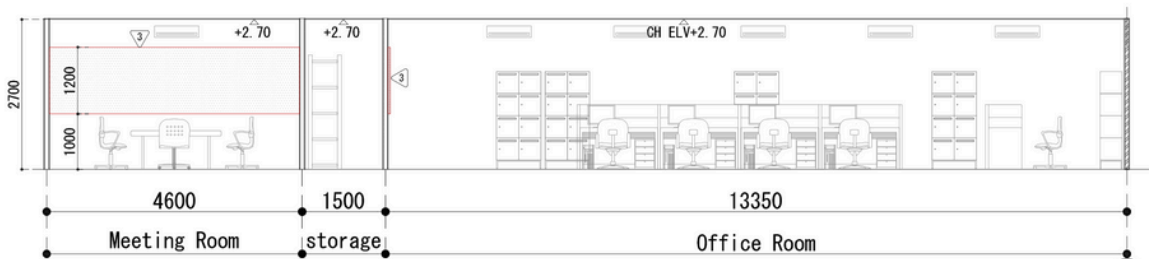
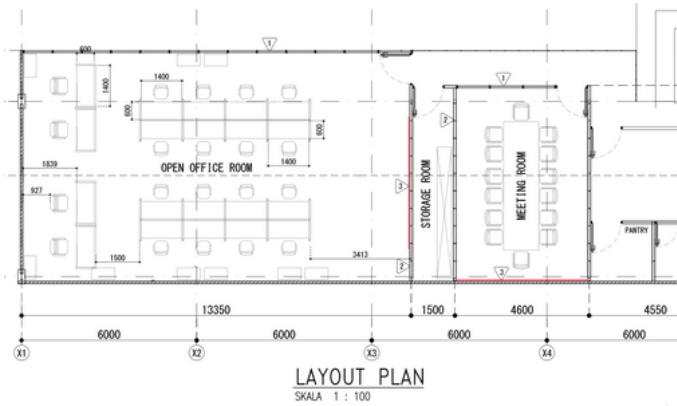
**CONSTRUCTION** 01



# WHAT WE BUILT

RENOVATION OFFICE PT TIMURRAYA KARYA MANDIRI  
KAWASAN JABABEKA, CIKARANG

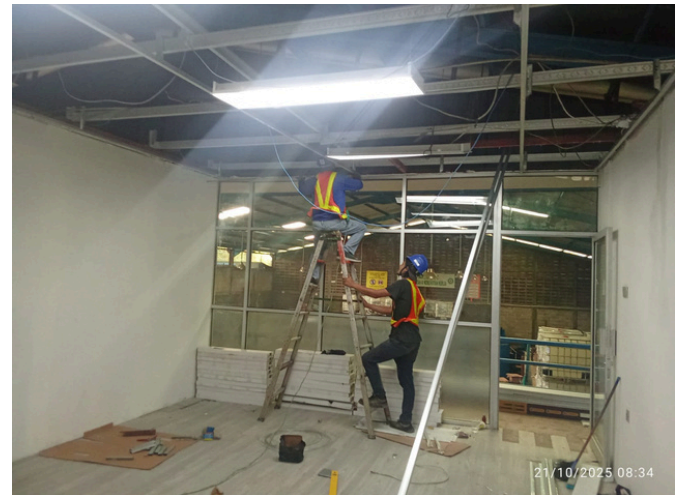
## DESIGN PLAN



# WHAT WE BUILT

RENOVATION OFFICE PT TIMURRAYA KARYA MANDIRI  
KAWASAN JABABEKA, CIKARANG

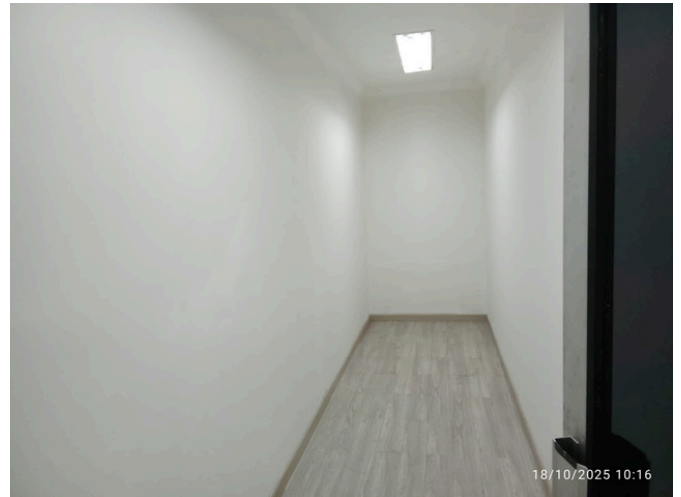
## ACTUAL PROGRESS



# WHAT WE BUILT

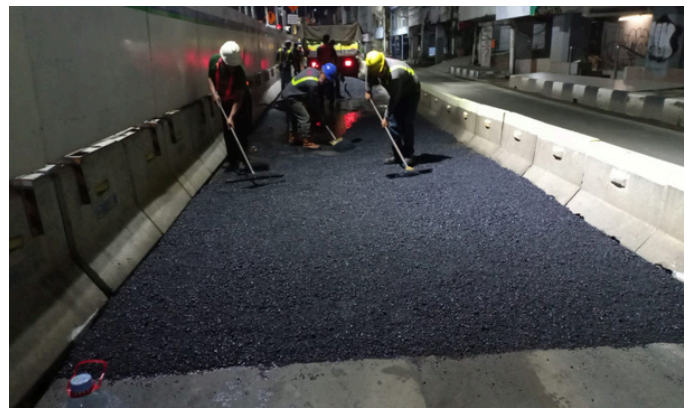
RENOVATION OFFICE PT TIMURRAYA KARYA MANDIRI  
KAWASAN JABABEKA, CIKARANG

## ACTUAL PROGRESS



# WHAT WE BUILT

## ASPHALT HOTMIX ROAD PROJECT



# WHAT WE BUILT

MEZZANINE IN FACTORY  
PT TOYOTA BOSHOKU INDONESIA – KARAWANG PLANT

## ACTUAL PROGRESS



# WHAT WE BUILT

MEZZANINE IN FACTORY  
PT TOYOTA BOSHOKU INDONESIA – KARAWANG PLANT

## ACTUAL PROGRESS



# WHAT WE BUILT

MEZZANINE IN FACTORY  
PT TOYOTA BOSHOKU INDONESIA - KARAWANG PLANT

## ACTUAL PROGRESS



# WHAT WE BUILT

MEZZANINE 1, 2 AND STAGING BOX EMPTY IN FACTORY  
PT TOYOTA BOSHOKU INDONESIA - KARAWANG PLANT

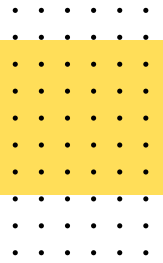
ACTUAL PROGRESS



MEZZANINE 2 AND STAGING BOX EMPTY  
PT TOYOTA BOSHOKU INDONESIA - KARAWANG PLANT



# MANAGEMENT



## Our Team

**RAMDHAN FURQON**

*Commissioner*

**ANDI MUHAMAD JANWAR**

*President Director*

**M ABDUL AZIZ ROMADHON MUKTI**

*Director*



## Address

### **HEAD OFFICE**

Perum Bumi Gesya Cikarang Block  
C3 No.17 Kel. Jayasampurna, Kec.  
Serang Baru, Kab Bekasi-Jawa barat.  
Tlp. (021)89099310 / 085719921457

### **BRANCH OFFICE**

Jl. Merbabu Karang Tengah RT/RW  
01/09 Kel. Karang Tengah Kec.  
Gunung Puyuh Kota Sukabumi -  
Jawa Barat





**PT. MIZU ONE KONSTRUKSI**

**MIZU ONE KONSTRUKSI**

[konstruksimizuonebangun@gmail.com](mailto:konstruksimizuonebangun@gmail.com)

[Ramdhan.furqon@mizuone.co.id](mailto:Ramdhan.furqon@mizuone.co.id)

[Andimjanwar@mizuone.co.id](mailto:Andimjanwar@mizuone.co.id)